

# From Our Chairman and CEO

The Community Foundation Serving Greeley and Weld County is pleased to present this 2015 Annual Report to you, the Foundation’s donors, volunteers, partners, and other supporters.

2015 marked the first year for us to work together as Chair of the Board of Directors and as President/CEO of the Foundation. The leadership transition went smoothly, but the year proved to be a challenging one in the financial markets. As always, due to the dedication of board and staff and the generous work of volunteers, the Foundation continued to make a positive impact on the community.

Last year, the Community Foundation provided \$1.9 million in grant and program support to more than 115 organizations. It also awarded 85 scholarships totaling more than \$163,000 to area students. On behalf of the board and staff of the Community Foundation, we would like to thank you for the generous support that made this possible.

Your involvement allowed the Foundation to connect donors to non-profits that help Weld County thrive. Including the many causes that Foundation donors specifically choose, endowments and other funds continue to be the locomotive that drives the work of supporting youth programs and scholarships, fostering the arts, serving as a resource to other non-profits, contributing to human services programs, animal welfare programs, and more.

We hope that you will continue to contribute to the good work of the Community Foundation in whatever way possible. Together, in 2016 we will continue to make a lasting impact in our communities for decades to come.

**Rob Waldo**  
Chair, Board of Directors

**Rand E. Morgan**  
President, CEO



# Centennial Society: A Lasting Legacy

Established in 2006, the Centennial Society recognizes donors who work with the Community Foundation to support causes after their lifetime. There is no minimum gift and members have the Foundation’s highest gratitude for their investment in the future of Weld County.

Participation occurs through planned gift provisions such as bequests, designating a Community Foundation fund of a donor’s choosing as a life insurance beneficiary or IRA plan, or designation of a life income agreement. Regardless of the source, the thoughtful commitment of these donors will make a difference in Weld County . . . forever.

## Members

- Dan and Deb Austin
- Dick and Reva Bond
- Margaret Brown
- Col. and Mrs. Stanley Cass
- Bill and Sharon Farr
- Tom and Nona Gordon
- Delia and John W. Haefeli
- George and Betty Hall
- Bill and Theresa Hertneky
- Judy and Ray Knapp
- Norman Lyster
- Elizabeth C. Lyster Eckles
- Tom and Barb Macgillivray
- Sandy Magnuson and Ken Norem
- Pete and Jean Morrell
- Norm and Marty Noe
- Edna Rady
- Julie Sauter
- R. Lee and Rebecca Seward
- Pam and Jim Shaddock
- Howard and Beverley Skinner
- Pat Sprock
- Scott and Pat Thomas
- Anonymous (10)

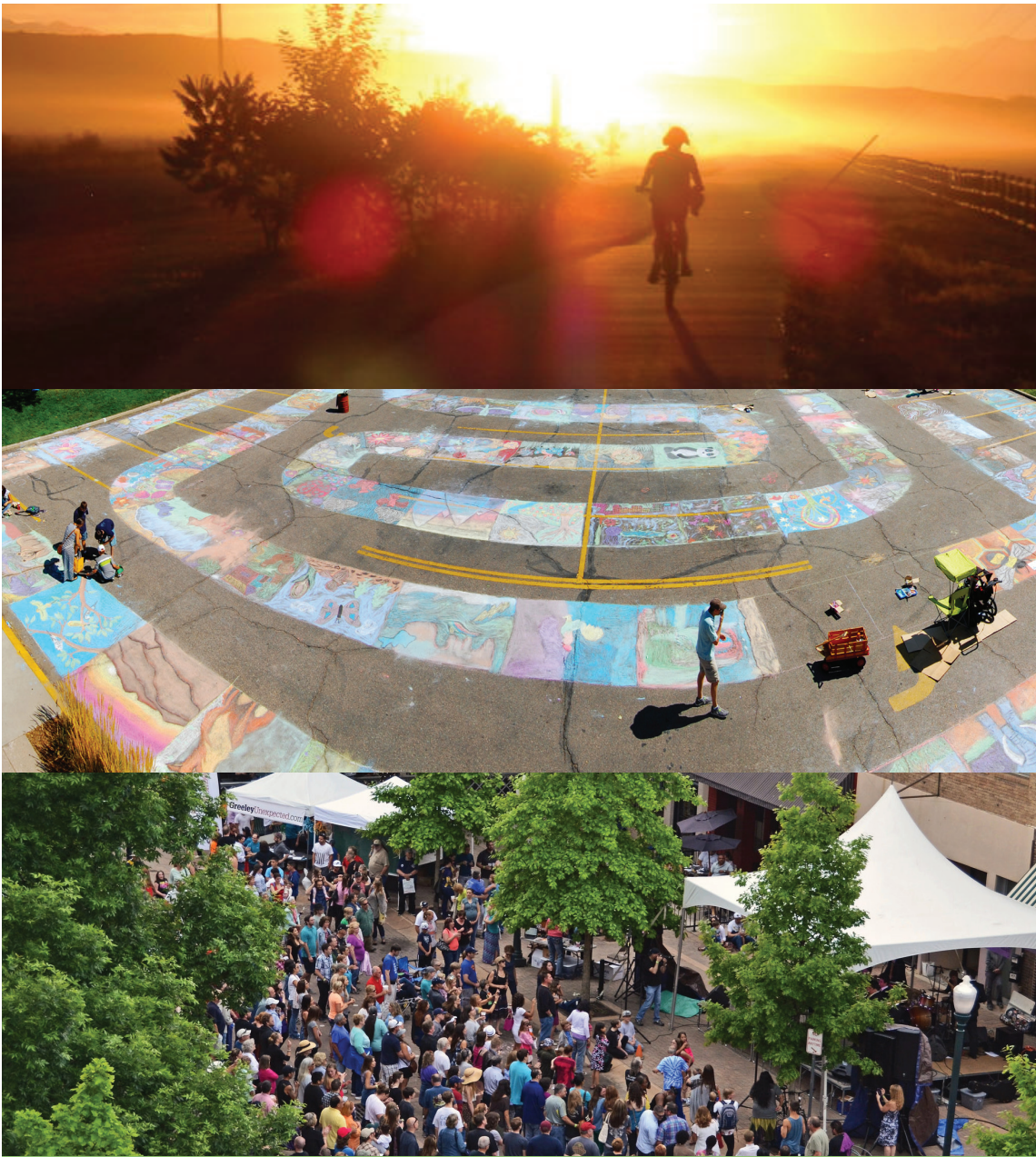
## Remembers

- Byron Brown
- Charles “Chuck” Childers
- Nelle and William Deason
- Mary Gillespie
- Lucile J. Gray
- Jerry Gress
- Mildred Hansen
- Gladys Hopkins
- Phylabe Houston
- Leoma Hunter
- Henry and Ruth Johnston
- Mary and Hubert Littler
- Helen C. McCandless
- Glenn McDonald
- Howard Smith
- Florence Winograd



2425 35th Ave., Suite 201  
Greeley, CO 80634  
info@cfsgwc.org  
www.cfsgwc.org  
970-304-9970

**Community Foundation Staff**  
Deborah Cameron, Comm. Officer  
Twyla Coblentz, Finance Officer  
Rand E. Morgan, President/CEO  
Lauren Weber, Program Officer



2015 Annual Report to the Community



# A 1972 Wish to Help Youth That Lives On Today

Times change and cities evolve. Today’s problems may not be the same issues the community will grapple with tomorrow. One of the roles that the Community Foundation serves is to be there after donors are gone to ensure they will always help find solutions to problems they care about.

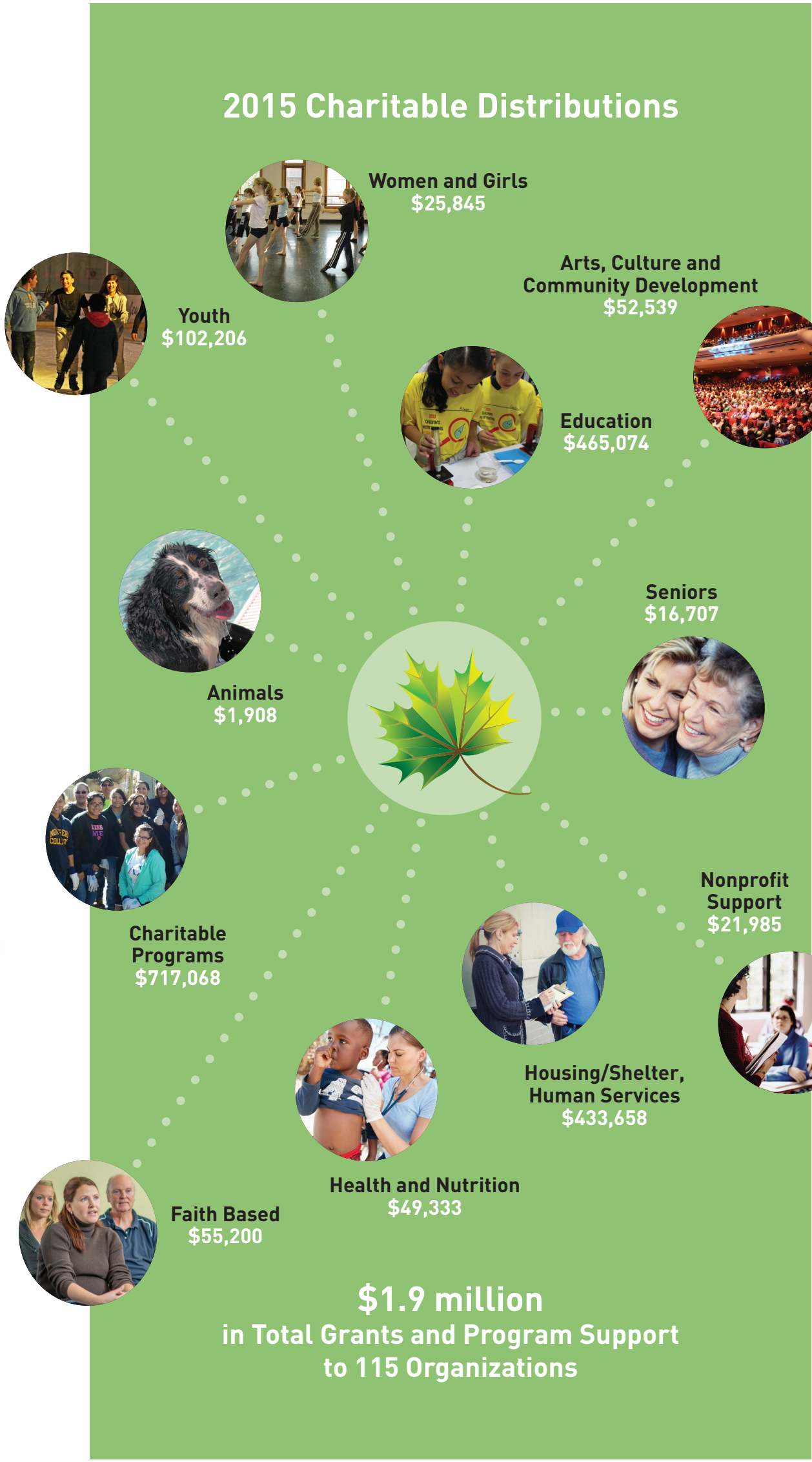
Hubert and Mary Littler knew this. They established their endowment fund at the Foundation in 1972 through an initial gift of corporate stock valued at \$170,000. Because they had no children of their own, they wanted their endowment to support children and young adults. Since the inception of the fund and with additional gifts from their estates, their generosity has provided more than \$2.9 million in grants – and still counting.

The Littler’s legacy has provided children countless opportunities they wouldn’t have had otherwise. Children experienced the joy of hearing a professional orchestra play; gained access to mental health counseling, sports, and innovative tutoring programs; and went on exciting field trips not paid for by school budgets.

Kids today do not always need what children needed in 1972. Last year, the program contributed to the fight against childhood hunger which has grown acute. In Weld County alone, 1 in 5 children struggle with food insecurity. They are even more vulnerable over the weekend when they lose access to school nutrition programs.

Some of the 2015 grants awarded from the Littler Youth Fund supported Weld Food Bank and Blessings in a Bag from Fort Lupton. Both groups provide backpacks with nutritious food to ensure that children have something to eat at home. They are filled with items such as shelf stable milk, juice, a high protein meal and three or four snacks. Bags are light enough for young shoulders to carry, but substantial enough to get them through Saturday and Sunday.

In realizing their philanthropic goals, the Littlers saw the powerful potential of the Community Foundation to make a lasting impact. Their generous act of philanthropy demonstrates the power each of us has to make a real difference in the cities and towns where we live, both now and forever.



## Statement of Financial Position as of December 31, 2015

<b>Assets</b>	
Cash, investments at fair value	\$ 17,314,772
Receivables	\$ 72,158
Equity held by third party	\$ 43,300
Other assets	\$ 58,826
<b>TOTAL ASSETS</b>	<b>\$ 17,489,056</b>
<b>Liabilities And Net Assets</b>	
Current liabilities	\$ 126,639
Annuity liability	\$ 50,113
Assets held for agency funds	\$ 974,829
<b>TOTAL LIABILITIES</b>	<b>\$ 1,151,581</b>
<b>Net Assets</b>	
Unrestricted	\$ 1,365,113
Temporarily restricted	\$ 4,483,000
Permanently restricted	\$ 10,489,362
<b>TOTAL NET ASSETS</b>	<b>\$ 16,337,475</b>
<b>TOTAL LIABILITIES AND NET ASSETS</b>	<b>\$ 17,489,056</b>

## Five Year Summary in millions

2011	2012	2013	2014	2015
<b>\$11.7</b>	<b>\$13.4</b>	<b>\$16.6</b>	<b>\$18.1</b>	<b>\$17.5</b>

## Board of Directors

<b>Officers</b>	<b>Members</b>
Rob Waldo, Chair	Matt Anderson
John Adams, Vice Chair	Karen Burd
Christine Richardson, Secretary	Nora Garza
Heidi Klepper, Treasurer	Donna Loyd
Tim Ulrich, Past Chair	Allen McConnell
	Stephanie McCune
	Bill Meier
	Mike Payne
	Lucie Wisehart